

# team Roehampton

June 2014

## Work Match is here to help

The council's Work Match service has helped dozens of local residents get back into work or training.



Work Match held a jobs fair in Roehampton earlier this year attracting 700 local people.

Team manager Chantelle Daniel explains what they're all about:

"If you are between jobs or working less than 16 hours a week then the Work Match team is here to help you. We're a new council service dedicated to helping unemployed Wandsworth residents into work or training. So far we've secured new roles for more than 100 local people who were struggling to find work on their own.

"We can help you access all sort sorts of local jobs. Currently we're trying to fill vacancies in construction, administration, catering, security, courier services, private hire, digital marketing, retail and many more. We can also refer you to local training providers, colleges and other support organisations which can provide any extra help you might need to get you on the road to a new career

"If you have a CV ready then send us a copy by email and we'll see if there's an opportunity that's right for you. If you don't have one yet then get in touch with the team and we'll help you get ready for the jobs market.

*"We're a really friendly team, our services are completely free and we can give you a real edge in your job search. You have nothing to lose so why not give us a try?"*

Get in touch today: Telephone: 020 8871 5191  
Email: [wandsworthworkmatch@wandsworth.gov.uk](mailto:wandsworthworkmatch@wandsworth.gov.uk)  
Web: [www.wandsworth.gov.uk/workmatch](http://www.wandsworth.gov.uk/workmatch)  
Check for live vacancies on twitter: #workmatch



## Adult Learners Week comes to Roehampton

The DARA Club on Minstead Gardens will host a series of FREE taster sessions during Adult Learners Week which starts on June 14th.

- Monday 16 June, 10am-11am. Dance class for Parents and Toddlers hosted by the Royal Academy of Dance.
- Monday 16 June, 6.30pm-8pm. Box Fit class from an experienced boxing coach.
- Wednesday 18 June, 10am-12pm. Confidence Building Workshop to help you prepare for the world of work.

To book your place or to find out about more events call 0208 871 8626 or visit [www.wandsworthlifelonglearning.org.uk](http://www.wandsworthlifelonglearning.org.uk)

# ALTON AREA MASTERPLAN

## Final masterplan to be published this year

**T**he 'preferred option' consultation is now over and the council's project team is busy examining local feedback and refining the Alton area masterplan.

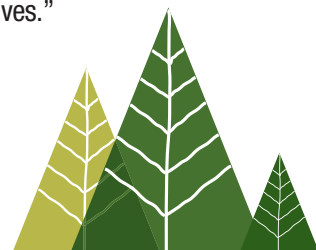
A report summarising the consultation process and the responses received will be available at [www.wandsworth.gov.uk/roehampton](http://www.wandsworth.gov.uk/roehampton) by the end of June. Copies will also be available at Roehampton Library and the council housing office on Holybourne Avenue.



By the end of the summer the team will be ready to publish a finalised plan which takes account of residents' views, can be built within budget and is within planning rules.

The team is also continuing to develop the 'council tenant and resident leaseholder offer' which will compensate households who need to move during the estate redevelopment. The offer will ensure every council tenant and resident leaseholder who wants to stay on the Alton will be offered a new home here.

Ravi Govindia, leader of Wandsworth Council, said: "Our aims for this huge investment project are to provide new jobs, better services, better homes and a much improved local environment. I want to see a final masterplan that offers a major improvement to local peoples' lives."





# Your questions answered

Here are the answers to some of the most common questions you asked us during the preferred option consultation:



## Q: Will all Secure Council tenants be able to stay on the estate?

**A:** Yes. All Secure Council tenants will be offered a new social rent home on the Alton and will retain their Right to Buy/Right to Acquire qualification period. Secure Tenants who have lived in their property for over a year will be entitled to compensation of up to £4,700 for the move.

## Q: Will council tenants have to move into temporary accommodation?

**A:** Our aim is to move affected households straight from their current property into their new permanent home. To achieve this the redevelopment will be phased with new homes built before old properties need to be vacated.

## Q: Will resident leaseholders be priced out of the redeveloped Alton area?

**A:** No, all resident leaseholders will be offered the opportunity to purchase a new home on the estate through an equity share scheme. The scheme will help leaseholders to buy a new property even if it costs more than their existing property – and without increasing their level of mortgage.

## Q: What will the new homes be like?

**A:** Each new home will meet the Mayor of London's size and quality standards. They will be modern, well laid out and energy efficient. Properties will have front doors facing the street and private open space to the rear. There will be no gated communities.

## Q: If the development goes ahead, how long will it take?

**A:** After the final masterplan is agreed it will be at least three more years before demolition work starts. Once the regeneration programme is underway it would take between five and eight years to complete.



**To find out more contact project manager Jonny Moore or community engagement coordinator Janine Newton:**

**Tel: 020 8871 6207**

**Email: [roehampton@wandsworth.gov.uk](mailto:roehampton@wandsworth.gov.uk)**

**Online: [www.wandsworth.gov.uk/roehampton](http://www.wandsworth.gov.uk/roehampton)**

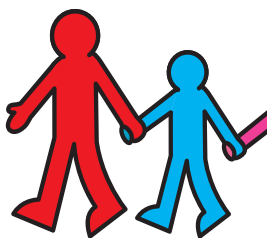
# A healthier Roehampton rises to the challenge!



**Hundreds of local people have run, boxed, swam, cooked and played their way to a healthier lifestyle as part of the year long Roehampton Challenge.**

This council scheme involved a series of local projects focussed on healthy eating, exercise, dental care, domestic safety, mental health, sexual health and giving up smoking.

Here are some of the highlights from this unique public health drive:



## Get physical

The Active Lifestyle project offered local people a huge range of physical activity sessions like buggy adventure walks, zumba, yoga, kick boxing, football, street dancing and many, many more.

Lots of classes are still running at Roehampton Sports Centre at low prices. Most are either free or just £2 per session.

Visit [www.wandsworth.gov.uk/activelifestyles](http://www.wandsworth.gov.uk/activelifestyles) or call 020 8871 6373

## Play rangers take to the parks

The Play Rangers scheme has seen local youngsters offered all sorts of fun and active supervised events in local parks, open spaces and community buildings.

A total of 161 children took part in these healthy, interactive sessions which helped them to learn how to play new sports and encouraged them to share, listen, use their imaginations and boost their self confidence.

## Masterchefs in the making

Another scheme saw local children being taught how to prepare and cook delicious, healthy, and quick recipes from scratch.

## Free gym and swim

Local people who made a positive, healthy change were rewarded with free swimming and gym memberships. In total more than 484 were handed out as the people of Roehampton rose to the challenge.

## Kick the habit

Dozens of local people have taken advantage of free pop-up clinics on giving up smoking.

You are four times more likely to quit for good if you use a stop smoking service and drop-in sessions continue every Tuesday from 10am to 3pm at the Cardiology Department, Queen Mary's Hospital.

For more help visit [www.stopsmokingwandsworth.co.uk](http://www.stopsmokingwandsworth.co.uk)



The Veg Box team visit Hackney

## Roehampton Veg Box putting down roots

**Local residents have been working together to get their vision for a new community fresh fruit and veg business off the ground in Roehampton.**

The team are now preparing their business plan for Roehampton Veg Box which will offer door-to-door deliveries of fresh, organic and locally grown groceries.

Local resident Adam explains more: "This business could be a genuinely useful service in Roehampton and help more local families make healthy food choices. We've had lots of support through the Roehampton Challenge. They have given us business training and we've been to visit a similar set up in Hackney which started in the same way and now employs over 40 people. That's a lot of local jobs and a lot of healthy eating!"

**"If you would like fresh fruit and veg direct to your door or if you'd like to get involved in the Roehampton Veg Box project then get in touch!"**

To register your interest email [tom.carman@plunkett.co.uk](mailto:tom.carman@plunkett.co.uk)