

**ALTON**

ROEHAMPTON SW15

# ALTON NEWS

Winter 2021/22

Issue 31

[www.AltonEstateRegen.co.uk](http://www.AltonEstateRegen.co.uk)

Twitter: @AltonMasterplan

[www.wandsworth.gov.uk/Roehampton](http://www.wandsworth.gov.uk/Roehampton)

**NEW YEAR'S GREETINGS  
FROM CLLR RAVI GOVINDIA**

**COMMUNITY ENGAGEMENT  
ACTION PLAN PUBLISHED!**

**MCKINNEY HOUSE  
OPENS ITS DOORS**

**ROEHAMPTON COMMUNITY  
SHED'S OFFICIAL OPENING**

**WHAT WILL THE ALTON  
REGENERATION DELIVER?**

**ALTON REGENERATION  
PLANNING UPDATE**





# NEW YEAR'S GREETINGS FROM THE LEADER OF WANDSWORTH COUNCIL

## *Cllr Ravi Govindia*

I would like to start by wishing everyone a happy New Year. The previous 12 months presented us all with challenges, not least, the COVID-19 pandemic which continues to impact our daily lives. In spite of this, the people of Wandsworth have shown great spirit and sense of community.

This has been evident in the rich series of events we held across the Alton Estate throughout 2021: We saw Danebury Avenue transformed into a pop-up art gallery which was given an audience choice award as part of the Wandsworth Art Fringe. The area became greener and more vibrant thanks to Alton Greened and 100 Daffodils for Harbridge initiatives, as well as the seed bomb making workshop. We've supported one another in the community through the Little Village Roehampton scheme aimed at helping families. We provided a new open space at Harbridge Square and, most recently, we held the grand opening for a new space for the Roehampton Community Shed to meet and work, providing a lifeline for older people in the fight against loneliness and mental health issues.

2022 will no doubt prove to be another productive year with more great events and activities for residents to get involved with.

We know that residents share our desire to see work progressing on the Alton Estate. I want to reiterate the Council's commitment to delivering our proposals for the area, creating over 1,100 new homes and improving the area with new community facilities, workspace and shops. The final agreement of our masterplan sits with the Greater London Authority and is awaiting a decision. We have been advised by Wandsworth planners that the Stage 2 referral to the Greater London Authority for the Alton Regeneration scheme was completed on 30th December 2021.

We have, however, completed work on the first site in the Alton Regeneration programme – McKinney House on Bessborough Road. Previously occupied by a car park and a 1930s two-storey building, the site has provided 10 new council homes, each with access to a private garden or balcony, as well as a secure communal garden with play equipment for children under five-years old. McKinney House was named after the former vicar of Holy Trinity Church, the late Rev. Jim McKinney who died almost three years ago. He was one of the founding members of the Roehampton Forum and Partnership created to bring local communities together in Roehampton. He was a strong believer in improving housing and creating wider housing choices for the community.

This is an exciting time for Roehampton and the Alton Estate and in early 2022, we are due to start work at Fontley Way, which will deliver a further 14 new council homes with parking and outdoor space. Our team is looking forward to continuing their work in the community and delivering more good quality homes that provide for people at all stages of life who live in the borough.



The completed McKinney House

# MCKINNEY HOUSE OPENS ITS DOORS!



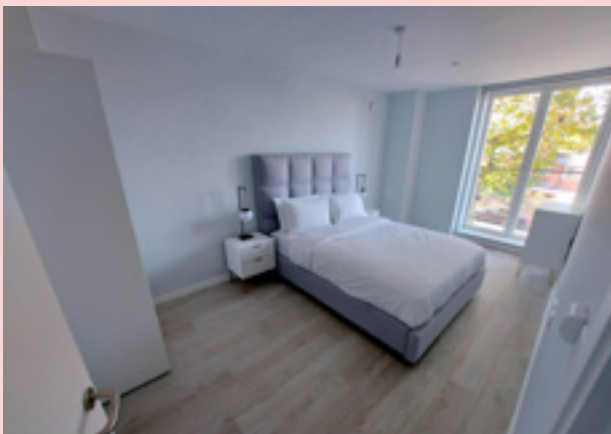
On 15th October, we held the official opening for the new housing development on Bessborough Road, which marked the completion of the first stage of the Alton Regeneration scheme. The block has been named 'McKinney House' to celebrate the life of former vicar of Holy Trinity Church, the late Rev. Jim McKinney. The Rev. McKinney was a prominent community figure – as well as being one of the founding members of the Roehampton Forum and Partnership, he chaired the Wandsworth Community Empowerment Network for 10 years and was a local school governor at Roehampton Church School. The Rev's two children, Ruth and Alex, cut the ribbon to formally open the block. Leader of the Council, Councillor Ravi Govindia, spoke at the event and said, *"I am delighted that we have been able to provide more good quality homes for our residents and I am also delighted that we have been able to honour the life of the Rev. Jim McKinney who was much-loved and did so much for the local community."*



At the end of October, we welcomed residents to their new homes in McKinney House. Emma and her three children were among the first to move in to one of the ground-floor maisonettes. She said, *"We are very excited and looking forward to the future and to making lots of wonderful memories in our new home. It is so lovely with big windows bringing a lot of light into the property. I was surprised when I first saw just how nice it is."* Julie, who moved into one of the apartments, told us: *"I am so happy to be living in McKinney House. The block is very clean. The flat is so spacious and very quiet. And my dog loves the large balcony space!"*



On 5th and 6th November, we hosted open days for Alton Estate residents to visit the block and see the type of accommodation that can be expected from future regeneration phases. Visitors were able to walk around a furnished 3-bedroom maisonette and unfurnished 3-bedroom flat, as well as the external areas and secure playground at the back of the block. Feedback was overwhelmingly positive, particularly about the size, quality, decoration and storage space of the new homes. Guests were then invited into the foyer, where they could view exhibition boards on the other proposed blocks in the Alton Regeneration scheme.





# ALTON REGENERATION PLANNING UPDATE



*We have been advised by the Local Planning Authority that the Stage 2 referral to the Greater London Authority for the Alton Regeneration scheme was completed on 30th December 2021. We look forward to a prompt and positive response.*

## MAIN CONTRACTOR SOON TO BE ANNOUNCED FOR FONTLEY WAY!



*The tendering process is now complete, and we are expecting to announce the company that has been awarded the contract for the build of our 14-home development at Fontley Way shortly.*

London based contractors with a wealth of experience in delivering new developments for residential and mixed-use have expressed an interest in and tendered for the contract. Their experience ranges from conversions of garage blocks into new homes, to small satellite sites as part of a broader regeneration. Previous developments are in proximity to local residential areas and schools, which demonstrates their ability to deliver projects in areas much like the Ibsley and Manresa neighbourhoods.

Work is expected to start on site at Fontley Way in the next couple of months, marking the beginning of the second residential block in the regeneration scheme. We will be holding a “meet the contractor” event during which the appointed contractor will be available to answer any questions you may have around the build and to discuss work experience opportunities on site for local residents.

Keep an eye on our community noticeboards, websites, and twitter page to stay up to date with Fontley Way news!



Fontley Way (Computer Generated Image)

# WHAT WILL THE ALTON REGENERATION DELIVER?



*In each edition of Alton News we are focusing on a key aspect of the proposed regeneration scheme.*

Did you know the scheme will deliver a new Nursery School, Day Nursery and Centre for Children and Families?

Eastwood Nursery School, Day Nursery and Children's Centre currently occupy the buildings at 166 and 168 Roehampton Lane. Existing buildings were adapted to serve these important community facilities and the service providers make the best of the premises. However, there are constraints to the current layout, which covers three storeys, two separate buildings and has limited outdoor space.

In the Alton Regeneration scheme, it is proposed that the Children's Centre and Nurseries will be co-located in a modern, purpose-built building at Portswood Place to meet the needs of the children and families in its care, with a secure central playground and adjacent classrooms.

Executive Headteacher at Eastwood, Emma Williams, Deputy Headteacher, Lisa Noel, and Chair of Governors, Adam Ockelford, explained to us that the proposed new building will offer greater flexibility to be more responsive to needs of the children. They summarised the main benefits of the new combined building around *inclusion*:

- Physical inclusion of the Nursery School, Day Nursery and Children's Centre within the community in a new location in the heart of the estate.
- Greater inclusion within the school setting by removing the barriers that separate buildings and

separate floors create. The new development will accommodate all of Eastwood's facilities within one building.

- Inclusion of children with Special Educational Needs and Disabilities. Eastwood Nursery School has one of only two specialist resource base provisions for children with social communication difficulties in the borough and the new building will integrate the department fully into the school. The inclusive design of the building will provide optimal opportunities for the children to flourish.
- Inclusion within the community by creating a 'hub' that offers all services relevant to Under 5s. This 'one stop shop' facility will offer advice and support to parents on a wide variety of family-related matters.
- Inclusion with external services. The 'hub' style base will facilitate partnership working with other local services for children and families including the Foodbank, Community Box scheme, and Little Village.
- Inclusion within the Roehampton landscape with easy access to green open spaces such as Richmond Park and Downshire Field and greater opportunities for outdoor learning (including Forest School) through engagement with the local natural environment. The new location also removes the associated risks of being situated adjacent to a main road and offers better configured outside space.



Portswood Place Community Hub (Computer Generated Image)

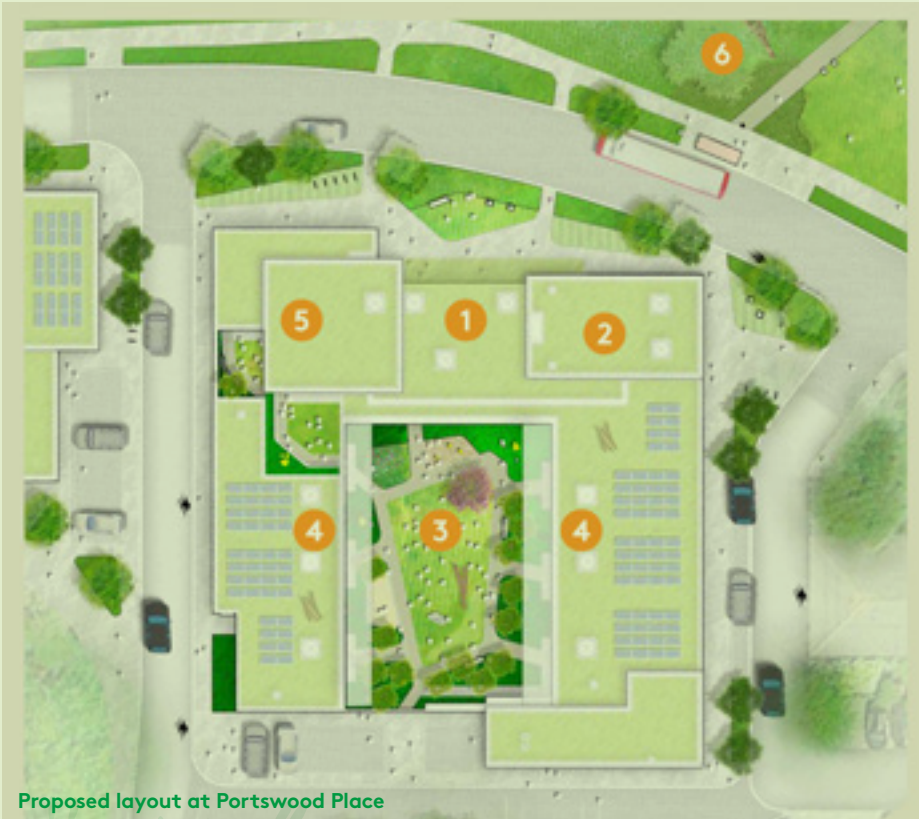




Eastwood Nursery School

*“We are looking forward to building and strengthening our Eastwood community and the community we serve.”*

*“The heart of the community with the community at its heart”*



Proposed layout at Portswood Place

- 1 Eastwood Nursery School Centre for Children & Families
- 2 Multi-Functional Hall and Community Space
- 3 Secure central playground
- 4 Classrooms with direct access to courtyard
- 5 Special Educational Needs classroom and adjacent playspace
- 6 Central location, convenient for Downshire Field



## NEWS FROM THE WESTERN AREA TEAM

### HARBIDGE AVENUE REFUSE

Residents will be aware of the ongoing general refuse and recycling issues on the estate. Following a review, the Council has installed robust Metrostor enclosures to the existing recycling banks on Harbridge Avenue together with some additional banks to improve capacity. We are optimistic this will make a real difference. Possible improvements to the refuse facilities to the Grade II listed blocks at Highcliffe Drive are also under consideration.

Danny Edwards, Area Housing Manager, says *“The Council is committed to ensuring that the refuse arrangements on the estate are as effective as possible and will evaluate further improvements where necessary”*.

The role of residents is crucial in ensuring that the estate remains a pleasant place to live. Please take care always to dispose of your refuse and recycling directly into the chute or the bins provided. For large or bulky items, please contact Waste Management on **020 8871 8558** or via the Council’s website [www.wandsworth.gov.uk](http://www.wandsworth.gov.uk) and search ‘bulk waste collection’. A highly competitive charge of £20.00 will be applied for up to four items.



# COMMUNITY ENGAGEMENT ACTION PLAN PUBLISHED!



In November 2021, the Council published the Alton Engagement Action Plan 2021/22 which sets out the large number of engagement activities which the Alton Regeneration team were involved with over the previous 12 months and identifies further activities for the subsequent 12 months.

The wide range of events and activities revealed in the Action Plan were designed to meet the objectives set out in the Engagement Strategy; a document published in November 2020 which detailed how we would ensure the best possible engagement with residents and stakeholders affected by the Alton Regeneration.

Further ideas and activities will be developed with the community as the year proceeds and an updated version of the Action Plan will be presented to the Council's committee annually.

The Action Plan 2021/22 is available to view in full on our webpages. Find it at:

[altonestateregen.co.uk](http://altonestateregen.co.uk)



# COMMUNITY ENGAGEMENT QUARTERLY ROUND-UP



*Over the past few months the Alton Regeneration team have been involved with a full and varied programme of events and activities on the Alton estate, including:*

## MURAL AT HARBRIDGE SQUARE

As part of Roehampton Community Week, we worked with local volunteers on a mini makeover of a redundant space on Harbridge Avenue. The area was transformed with lights, planters and colourful playground games into a more usable and attractive area for play, picnics and relaxation. Local street artists completed the renovation of 'Harbridge Square' in September by painting a mural based on design feedback from local residents. The image features children playing and a deer from Richmond Park whose antlers transform into a tree branch.



## RECYCLING WEEK INFORMATION STALL

During national Recycling Week in September, we held a recycling challenge to see if residents could correctly select what could and could not be recycled from a selection of everyday waste. Of all the age groups taking part, primary school children scored the highest; but everyone learned something! The stall was in addition to a weekly information stand run by local volunteers, providing news about the exciting things happening on and around the estate.





## RUN, WALK, SCOOT 5K

'Run, Walk, Scoot' was a fun mini marathon in September. Over 60 participants of all ages and abilities devised their own routes, visited the four community buildings on the estate and collected colourful stamps along the way. The route ended at the pop-up art gallery on Danebury Avenue, where race-finishers received a well-deserved medal. Those taking part included three generations of one family and the youngest racer was just a few weeks old.



## SPICE OF LIFE FOR BLACK HISTORY MONTH

In October, residents aged between 55 and 98 from four of the local sheltered housing schemes imagined they were on a tropical island and enjoyed a vibrant evening of food and music at our Spice of Life event at the Manresa Clubroom to celebrate Black History Month. Local resident, Winston, has over 47 years' experience as a chef and cooked up a feast including jerk pork & chicken, curry goat and rum marinated snapper.



## SUPERHERO PUPPET MAKING

During the October half-term, families joined us in the Alton Arts Hub to learn new skills, including sewing, and to make superhero puppets. The children were able to choose what they wanted to make from a variety of puppets, and realised that they can be anything they want to be – including a superhero!



## WHITE RIBBON PARADE

The Roehampton Women's Network held a Torch Parade on 25th November to launch White Ribbon fortnight. This is an international campaign to end male violence against women and girls. Residents were invited to write a message of inspiration on a white ribbon and listen to speeches from Deputy Mayor, Councillor Lucy Mowatt, Fleur Anderson MP, and local Councillor Claire Gilbert, before walking together in solidarity down Danebury Avenue to Portswood Place. If you would like to join the Roehampton Women's Network please contact:

[vicky.marie.pigott@gmail.com](mailto:vicky.marie.pigott@gmail.com)

## 100 DAFFS FOR HARBRIDGE

At the end of October, many families joined the Alton Greened team to plant 100 daffodil bulbs in the tree pits along Harbridge Avenue. The team were kept even busier than expected, thanks to a generous donation of 4,000 crocus bulbs from the Putney Rotary Club. We look forward to the uplifting burst of colour when the bulbs flower in Spring!







## ROEHAMPTON COMMUNITY SHED'S OFFICIAL OPENING

In early December, we celebrated the launch of Roehampton Community Shed in its new location at 5 Portwood Place. After being forced to close during the pandemic, a lengthy planning application process and several months of collaboration between the Shed team, Age UK Wandsworth and the Regeneration Team to redecorate the former takeaway shop unit, we were delighted to see the Shed operating fully again in its bigger and brighter premises.

Shed members, who range in age from 70 to 85, are delighted to be back in the workshop undertaking projects for the local community, joking with one another and enjoying a brew together. John Burns and Iori Harries are two of the founding members who joined the club in 2016. Iori said: *"My family and friends were dispersed, and the shed filled a hole in my life. I like working with my hands and get a lot of pleasure from being here."* When John retired from work, he missed that social interaction. He said: *"This has given me a bunch of good friends as well as an opportunity to do something good in the community. I would say to anyone interested in the Shed; come and try - we are a friendly bunch!"*

The opening event was a fantastic opportunity for the Shed to showcase some of the amazing projects they had been working hard on in the previous months, including hedgehog houses which were desperately needed as Winter approached, and dexterity boards with various switches, locks and plugs which are used by the Physio Team at Queen Mary's Hospital to help patients exercise their hands. Attendees also enjoyed a specially made shed-shaped cake!



Top: Opening day

Middle: The Shed Cake!

Bottom: The Dexterity Board



# ROEHAMPTON FESTIVE FORTNIGHT

*Roehampton was in full festive spirit with a jam-packed itinerary of events taking place from 25th November – 26th December; and the Regeneration Team were also out in full force spreading the festive cheer!*

## LANTERN MAKING

We had great fun spending the day at Heathmere Primary School and making lanterns with pupils from Years 1 & 2 for the Schools' Lantern Parade, that took place alongside the Christmas tree light switch on. The children were really creative with their designs, including producing stained glass effects with coloured paper which glowed vibrantly when the lanterns were illuminated.

## BAUBLE AND TREE DECORATING

Roehampton Community Shed kindly hand cut over 150 wooden bauble and tree shaped decorations for residents to decorate with paint, sequins, and stickers. Once decorated and varnished, we hung them on the Roehampton Christmas tree. Last year we organised the first ever Christmas tree for Roehampton. Residents loved the tree and white lights but some commented that it would look even better if it was further adorned. The Regeneration team is always keen to hear residents' views so this year, not only was the tree decorated; it was decorated by the community.

## LANTERN PARADE AND CHRISTMAS TREE SWITCH ON

On 30th November, we welcomed families and pupils who processed from their schools to the bottom of Danebury Avenue with their homemade lanterns, as part of this year's Lantern Parade. The audience joined the Mayor of Wandsworth for a countdown from 10 to 1 before he hit the switch that lit up the Roehampton Christmas tree and heralded the start of Christmas. The crowd was entertained by Claire, a sensational trained opera singer, who led us in a festive sing-along of well-loved Christmas classics including Rudolph the red nosed reindeer, Good King Wenceslas and Do you wanna build a snowman? from Disney's Frozen!

## OVER 55'S PANTO

Following the success of Rah Rah Theatre's Summer show, residents of the local sheltered housing schemes asked if we could book the panto, Dick Whittington, for them to start their countdown to Christmas. We asked Rah Rah to make it 'age' appropriate and they didn't fail to deliver a sprinkling of risqué humour! The audience at the Manresa Clubroom heckled and howled with laughter as they enjoyed mince pies and other festive treats. They have already asked if the Regeneration Team would host Rah Rah's Summer 2022 show for them. If you would like to be notified of future events for the over 55's, please email: [jo.baxter@richmondandwandsworth.gov.uk](mailto:jo.baxter@richmondandwandsworth.gov.uk)

## SHARE THE LOVE CARD DECORATING

Local children joined us in the Alton Arts Hub to decorate Christmas cards for Age UK Wandsworth's Share the Love appeal. The cards were then sent to bring joy to older, isolated residents in the community.

## FAMILY PANTO

We also hosted a family friendly version of Dick Whittington in the Alton Activity Centre, which played to a full house. Children packed the front rows and gave the actors a run for their money with their quick-witted quips. They heckled harder and louder than the over 55's! As they were leaving, the audience told us what a fabulous time they had had and that they hoped to see more theatre shows on the estate. If you would like to be notified of future family events, please email: [jo.baxter@richmondandwandsworth.gov.uk](mailto:jo.baxter@richmondandwandsworth.gov.uk)



Tree decorating



Lantern making



Over 55's panto



Family panto



Bauble making



Santa's procession to the Christmas market



Lantern parade and Christmas tree lights switch on



Share the Love card decorating

Share the Love card decorating





## CHRISTMAS MARKET

With two weeks to go until the big day, we treated Roehampton to a Christmas Market, delivered in partnership with Roehampton Community Week. The event began with Santa's procession from the Christmas tree at Danebury Avenue to Portswood Place, led by several local children acting as reindeer. Upon arrival at the market, Santa took pride of place on his throne in a magical grotto at the Alton Arts Hub created by Roehampton University's Theatre Department. Over 150 children visited Santa and collected a gift that had been kindly donated by the Putney Rotary Club. Children could also get involved in a variety of free arts & craft activities, including badge making with the Putney Society.

20 stalls took part selling a range of homewares, crafts, sweet treats, handmade cards, bags, scarves, and clothing; and there were plentiful food choices on offer including Filipino, Caribbean, Indian and traditional festive fayre.

Entertainment was provided by local singing duo Nick & Sarah, and a choir lead by Deacon Kathy from the Methodist Church with assistance from the Revd Joshua from Holy Trinity Church and accompanied on the flute by Fleur Anderson MP.

Over £240 was raised from stall money, donations to visit Santa, and proceeds from the sale of Santa hats and felt animal masks, and was split equally between two local charities - the Foodbank and Little Village - who provide so much support to our community.



## UPCOMING EVENTS:

*Keep an eye on our community noticeboards, websites and twitter page for information on upcoming events and activities!*

Following positive feedback from residents about how much they and their children enjoy craft workshops, the Regeneration team will be running more arts and craft events from the Alton Arts Hub at 6 Portswood Place. If you would like to share a crafting skill with others or would like to be notified about upcoming events, contact our Community Engagement and Cultural Coordinator:

[jo.baxter@richmondandwandsworth.gov.uk](mailto:jo.baxter@richmondandwandsworth.gov.uk)

Visit our website [www.altonstateregen.co.uk/events-programme](http://www.altonstateregen.co.uk/events-programme) or twitter [@altonmasterplan](https://twitter.com/altonmasterplan)





# AN INTRODUCTION TO...



## THE PUTNEY SOCIETY

Did you know that the Putney Society, a registered charity, has always included Roehampton? Founded by Roehampton and Putney residents in 1959, the Society is run by members for residents. Over its 62 years it has worked hard – and still does – on matters of interest and concern for those communities. An independent organisation, with no political or commercial ties or influence, it is affiliated to the London Forum of Amenity Societies.

## WHAT DO WE DO?

Working with our members, we keep an eye on what's happening in Putney and Roehampton. We:

- **listen and respond** to local concerns raised by residents – about rubbish and recycling, litter, traffic management, planning, health and social care, upkeep of local green spaces, communications, etc.
- **campaign** to those with the power to make change happen. For example, people with no computer, tablet or smart phone still need information in paper form.
- **work** with individuals, groups, the Council, police, health and social care, transport providers, and planning teams, to tackle issues which concern us all – safe streets, clean air, good health and social care facilities, parks and green spaces, etc.
- **support** local charities – we've helped Regenerate Rise, Wandsworth Food Bank, Roehampton Methodist Church, and others.
- **report back** in the Bulletin, on our website, through social media, letters, emails phone calls, etc.

Four 'Panels' (Community, Buildings, Open Spaces and Transport) meet monthly. Run by members and overseen by an Executive Committee, each considers issues from an independent viewpoint. Furthermore, an Air Quality Group monitors, records and reports on local air quality.

## WHAT HAVE WE RECENTLY ACHIEVED IN ROEHAMPTON?

**We regularly help on the 'information stall' in Danebury Avenue (August and ongoing)**

**Planting (September and ongoing)**

We helped to plant the Victorian 'drinking fountain' memorial at the bottom of Medfield Street with shrubs and bulbs.

**Public meeting on rubbish, recycling, repair, and re-use (22 November)**

We organised a public (and livestreamed) meeting, attended by over 50 people, and featuring four great speakers including Iori Harries from Roehampton Community Shed.

**Stall at Roehampton Christmas market (11 December)**

We gave away fruit, mince pies, art materials for children and information about the Society!



To encourage shoppers to support local traders in Putney, our Discount Scheme restarted on 1 December. Members receive discounts at some of the independent businesses when showing their Discount Card.

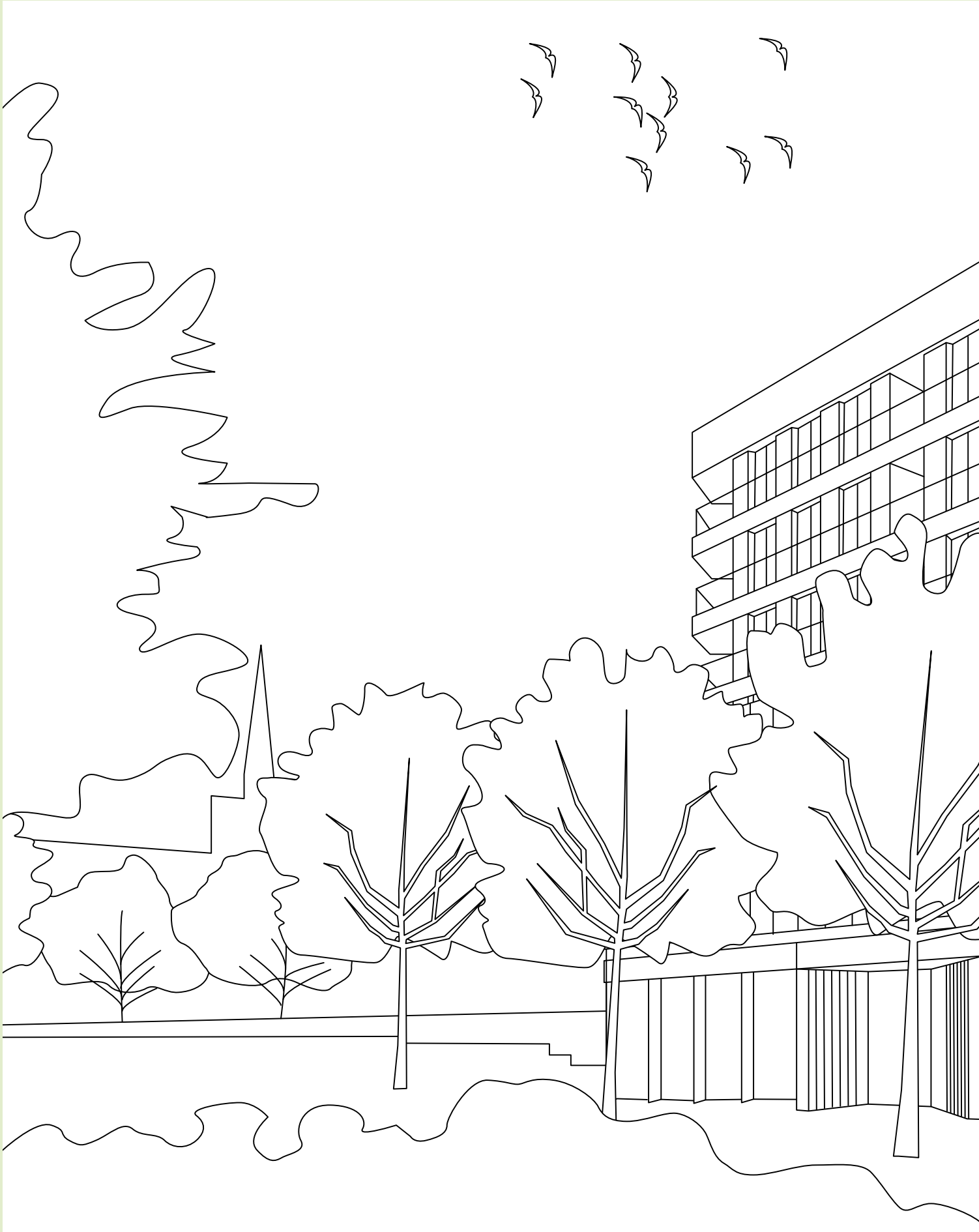
Joining the excellent Roehampton Response Network online meetings in 2020 helped us increase our involvement in Roehampton significantly.

## PLEASE ADD YOUR VOICE AND JOIN US...

Membership is open to all in Putney and Roehampton, SW15 area. For £12 a year by Direct Debit, you receive the monthly Bulletin by email, access to all Panel meetings and Open meetings and a chance to get involved in helping our local communities. See website [www.putneysociety.org.uk](http://www.putneysociety.org.uk) for membership options, or phone/email for details **020 8785 7115 / [membership@putneysociety.org.uk](mailto:membership@putneysociety.org.uk)**

# *Just for fun!*

Colour me in...



Block A: Community and residential building (based on Computer Generated Image)





# BOOST YOUR IMMUNITY THIS WINTER

Winter is tough at the best of times, but with two significant viruses – flu and COVID-19 – circulating alongside all the normal colds and sniffles, it's more important than ever to protect yourself.

Your local NHS are encouraging people to come forward and have their COVID-19 and flu vaccines to help reduce the spread of the viruses and protect themselves, family, friends and the wider community.

Dr Andrew Murray, local GP and Chair of South West London Clinical Commissioning Group, said: *"As we know, Covid rates are going up in the community quite dramatically – we are seeing a lot of the Omicron variant. The more doses of the vaccine you have, the less likely you are to end up in hospital. So we're encouraging everyone to come down. If it's your first dose, your second, your booster, just get that jab done."*

The COVID-19 and flu vaccines are safe and

effective and will give you the best protection against both viruses. It's never too late to get vaccinated. If you have any concerns, please email your questions to:

[WandsworthCCG.GetInvolved@swlondon.nhs.uk](mailto:WandsworthCCG.GetInvolved@swlondon.nhs.uk) or write to **Your Vaccine Questions, 6 Portswood Place, London, SW15 4ED.**

You do not have to wait to be contacted, anyone aged 12 and over is eligible for a vaccination. You can book a vaccination appointment online through the National Booking System: [www.nhs.uk/conditions/coronavirus-covid-19/coronavirus-vaccination/](http://www.nhs.uk/conditions/coronavirus-covid-19/coronavirus-vaccination/)

We advise everyone to book in for an appointment to reduce waiting times. You may need to queue for longer if you choose to walk in, as sites may be busy. Details of walk-in clinics can be found at: [www.swlondonccg.nhs.uk/covid/where-can-you-get-vaccinated/vaccination-walk-in-clinics/](http://www.swlondonccg.nhs.uk/covid/where-can-you-get-vaccinated/vaccination-walk-in-clinics/)

Please wear a mask or face covering at clinics.



## SIGN UP TO RECEIVE TEXT ALERTS

Our text message distribution list will enable Residents to receive news and event information relating to the Alton Regeneration quickly and directly.

If you are interested in signing up to receive our text alerts, please call or text **020 8871 6207** or email us at [roehampton@wandsworth.gov.uk](mailto:roehampton@wandsworth.gov.uk) with your name, address, mobile phone number and the phrase/subject line 'Alton text alerts', and we will add you to our SMS distribution list.



## ALTON NEWSLETTER HAVE YOUR SAY!

The Alton Regeneration Team try to put together news and articles that we think you'd like to hear. Do you enjoy it? Is it relevant and of interest? What else would you like included?

We'd appreciate your feedback to help shape future editions.

Please send any complimentary comments or constructive criticism to our mailbox, [roehampton@wandsworth.gov.uk](mailto:roehampton@wandsworth.gov.uk) putting 'NEWSLETTER FEEDBACK' in the subject line.

Or call us on **020 8871 6207**

We look forward to hearing from you.

*The Alton Regeneration Team*



## YOUR WARD COUNCILLORS

Due to the outbreak of COVID-19, Wandsworth councillor surgeries are cancelled until further notice. You can contact your local councillors at:

**Cllr Jeremy Ambache**  
[Cllr.J.Ambache@wandsworth.gov.uk](mailto:Cllr.J.Ambache@wandsworth.gov.uk)

**Cllr Claire Gilbert**  
[Cllr.C.Gilbert@wandsworth.gov.uk](mailto:Cllr.C.Gilbert@wandsworth.gov.uk)  
07841 098182

**Cllr Sue McKinney**  
[Cllr.S.McKinney@wandsworth.gov.uk](mailto:Cllr.S.McKinney@wandsworth.gov.uk)

You can also contact the Cabinet Member for Housing:

**Cllr Jonathan Cook**  
[Cllr.J.Cook@wandsworth.gov.uk](mailto:Cllr.J.Cook@wandsworth.gov.uk)



## REGENERATION TEAM

You can contact the Regeneration Team on **020 8871 6207** or [@AltonMasterplan](https://twitter.com/AltonMasterplan) or at [roehampton@wandsworth.gov.uk](mailto:roehampton@wandsworth.gov.uk)

